



MONTHLY MEMBERSHIP PROGRESS REPORT

District 105 E

Results as of: 11/30/2014

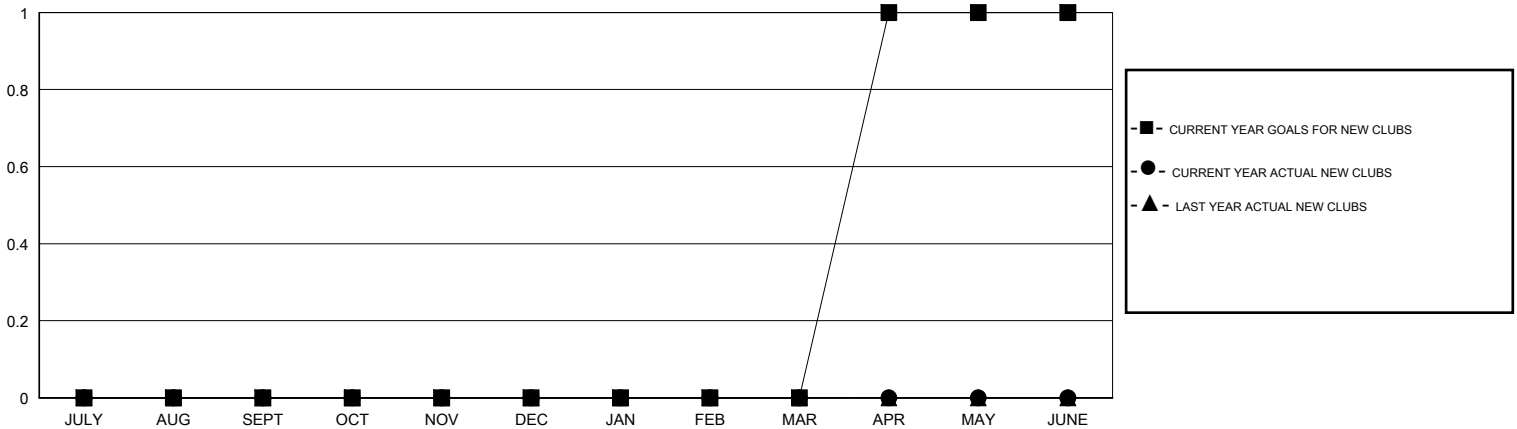
GMT: Elisabeth Haderer

LOCATION ENGLAND

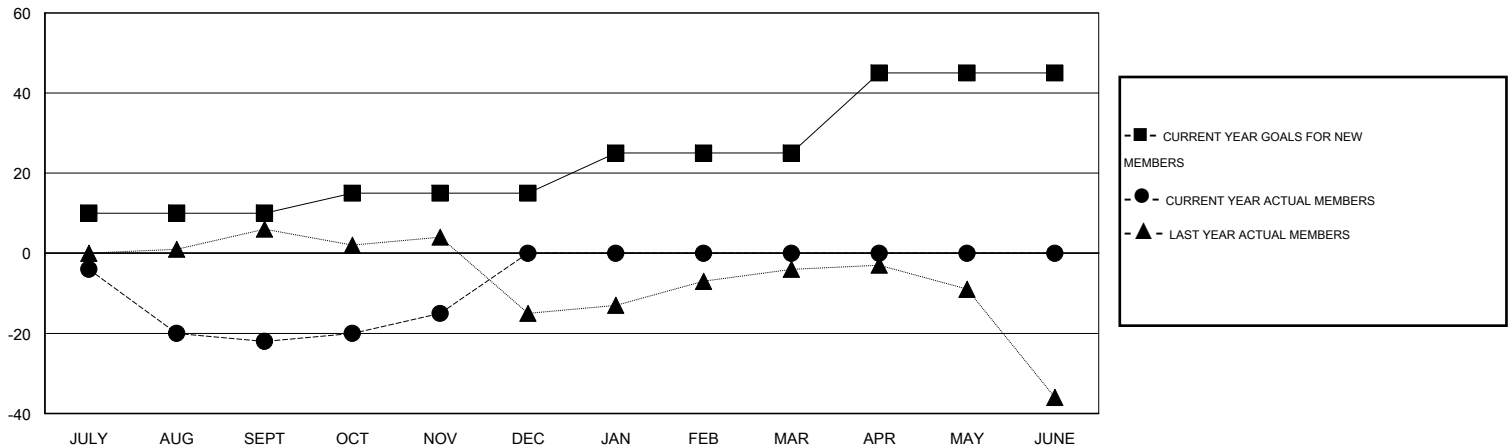
GMT CA 4

Clubs					Members				
RESULTS FOR 2014-2015					RESULTS FOR 2014-2015				
QUARTER	NEW CLUB GOAL	NEW CLUBS	DROPPED CLUBS	NET GAIN/LOSS	QUARTER	NEW MEMBER GOAL	CHARTER AND NEW MEMBERS ADDED	DROPPED MEMBERS	NET GAIN/LOSS
JULY/AUG/SEPT	0	0	2	-2	JULY/AUG/SEPT	10	12	34	-22
OCT/NOV/DEC	0	0	0	0	OCT/NOV/DEC	5	18	11	7
JAN/FEB/MAR	0	0	0	0	JAN/FEB/MAR	10	0	0	0
APR/MAY/JUNE	1	0	0	0	APR/MAY/JUNE	20	0	0	0

GOALS AND ACTUAL NEW CLUBS CUMULATIVE



GOALS AND ACTUAL MEMBERS CUMULATIVE



DROPPED CLUBS: 2	16 CLUBS OF 59 ADDED 1 OR MORE NEW MEMBERS	<u>GENDER DISTRIBUTION</u> MALE 865 (76.68%) FEMALE 263 (23.32%)
<u>DROPPED MEMBERS</u> DECEASED 4 CLUB CANCELLED 0 OTHER 41 TOTAL 45	CLICK HERE FOR HEALTH ASSESSMENT DATA	FAMILY UNIT MEMBERS 161 HEAD OF HOUSEHOLD 78 NON-HEAD OF HOUSEHOLD 83